



Harold's Worst Nightmare SPaG Challenge Cards



twinkl

Harold's Worst Nightmare SPaG Challenge Cards

- 1 Correct these names by rewriting them with a capital letter.

harold



muffin



twinkl.com

Harold's Worst Nightmare SPaG Challenge Cards

- 2 Rewrite this sentence with finger spaces in the right places.

Hislife wasperfect.



twinkl.com

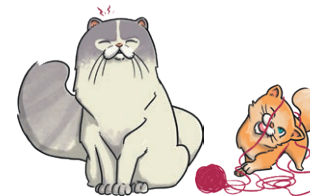
Harold's Worst Nightmare SPaG Challenge Cards

- 3 Add **-s** or **-es** to make these words plural.

box



cat



human



twinkl.com

- 4 Rewrite this sentence, using a capital letter and full stop.

the box made a noise



- 5 Add **-ed** to these verbs to make them past tense.

look ____

open ____

ruin ____



- 6 Which of these sentences is correct?

The humans put Muffin to bed

The humans put Muffin to bed?

The humans put Muffin to bed.

the humans put Muffin to bed.



- 7 Can you spot the capital letters in this sentence?

He found a spot that Muffin couldn't reach.



- 8 The word **'and'** is missing in this sentence. Can you spot where? Rewrite the sentence correctly.

She looked so tiny lonely.



twinkl.com

- 9 Put these words into a sentence.

crept He from down shelf the .



twinkl.com

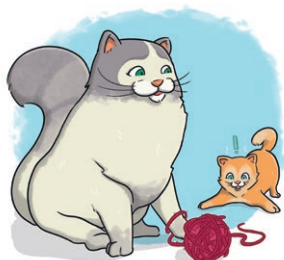
- 10 Choose the right word to complete each sentence.

played playing play

Muffin liked to _____.

She _____ all day.

She loved _____ with Harold.



twinkl.com

- 11 Write these sentences in the correct order.

They became friends.

Harold lived with some humans.

Muffin moved in.



twinkl.com

1. Harold Muffin
2. His life was perfect.
3. boxes cats humans
4. The box made a noise.
5. looked ruined opened happened
6. The humans put Muffin to bed.
7. **H**e found a spot that **M**uffin couldn't reach.
8. She looked so tiny **and** lonely.
9. He crept down from the shelf.
10. Muffin liked to **play**. She played all day. She loved **playing** with Harold.
11. Harold lived with some humans. Muffin moved in. They became friends.