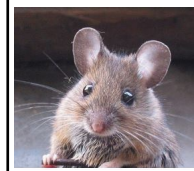
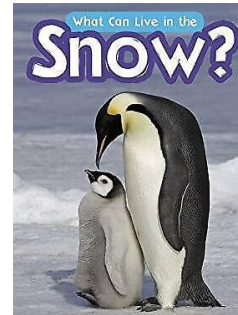


### **Literacy**

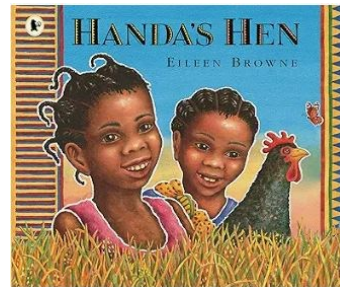
. In literacy we will start the term looking at the beautiful text 'Lost and Found'. It is a heart-warming story of a boy who finds a penguin at his door and tries to return it, but no one seems to be missing a penguin.

The next book will be a non fiction text 'What Lives in the Snow?' This will give us the chance to explore those features of a non fiction text and compare how this type of book is different to a fiction text.

We will then read 'Handa's Hen'. This will be looking at a contrasting environment to the polar regions we have been exploring during the first part of the term.



Mice Class  
Summer Term 1  
Newsletter



### **Personal and Social Development**

In PSHE this term will be exploring who the children can trust in school if they are worried about things. We will continue to explore relationships and discuss what makes a good friend and how to resolve disagreements with their peers. We will also continue to evaluate our school and class rules and learn how these rules help look after our environment. And our local community.

### **Religious Education**

In RE this term we will be exploring what places are special to different people. We will be exploring special places for different world religions. Children will learn that churches / chapels / cathedrals are special places to Christians; mandirs are special places to Hindus; synagogues are special places to Jewish people; mosques are special places to Muslims; gurdwaras are special places to Sikhs.

### **Understanding the World**

As scientists this term we will be looking at contrasting habitats. We will start by looking at polar habitats and how animals and plants adapt to live in this cold environment. We will then move on to look at Kenya which is a hot habitat. We will look at how this is different to the polar regions and what impact this has on the plants and animals that live there.

As geographers, we will be finding the polar regions in the world to link with our science and literacy work this term. We will then move on to hot regions in the world and look at Kenya. The children will be using maps of the world and globes to find the hot and cold regions in the world.

### **Mathematics**

In maths this term we will be focussing on number. We will be comparing quantities of objects of different sizes and avoiding misconceptions regarding size and quantity. We will be looking at ordinal numbers and using appropriate mathematical vocabulary to discuss these numbers. We will be recalling number bonds to 5 and moving on to look at number bonds to 10 and learning about the relationship between these numbers. We will be doubling numbers and recognising doubles and non doubles in different ways such as on butterfly wings and on ladybirds.

### **Expressive Art and Design**

In art we will be exploring watercolour painting and looking at the artist David McEwen. David paints watercolour paintings in polar regions of the world. We will study how he works in such a cold environment and look at his use of colour to portray the polar landscapes and animal.

We will also look at African patterns and the colours used to reflect the hot landscapes in Kenya and link to our geography work this term.

### **Physical Development**

This term we will be focussing on Athletics. The children will develop effective jumping and throwing techniques and will throw in varying ways, distances and develop accuracy.

The children in Mice Class will have PE on Mondays and Wednesdays.

Woodpeckers will have Forest School on Monday and PE on Wednesdays.