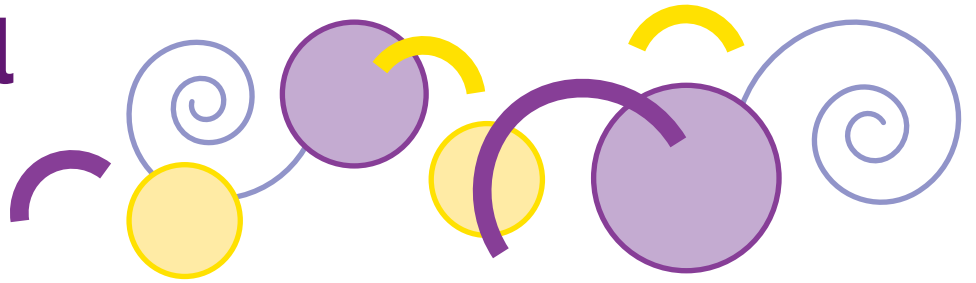


Time Travel

KS2 Maths



Activity 1

- a. Find and circle all the numbers which are multiples of 4.
- b. Write the multiplication calculation next to each multiple of 4 you have found.
The first one has been done for you.

$1 \times 4 =$

4

40

12

35

10

36

8

24

7

31

16

32

21

28

14

27

20



Activity 2

Mrs Vee and Chris used the 4 times table to help them work out the 8 times table.

Find the answer for each 4 times table question then double it to help you work out the answers to the 8 times table questions.

$1 \times 4 = 4$



$1 \times 8 = 8$



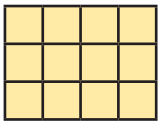
$2 \times 4 = 8$



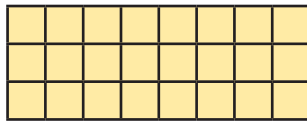
$2 \times 8 = \underline{\hspace{2cm}}$



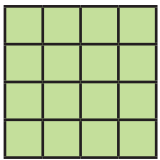
$3 \times 4 = \underline{\hspace{2cm}}$



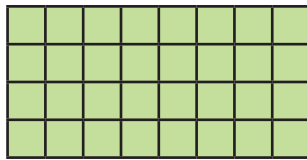
$3 \times 8 = \underline{\hspace{2cm}}$



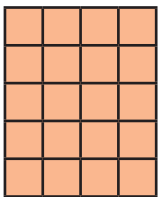
$4 \times 4 = \underline{\hspace{2cm}}$



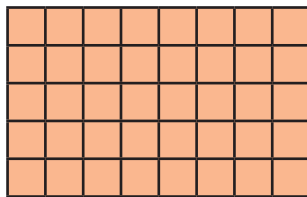
$4 \times 8 = \underline{\hspace{2cm}}$



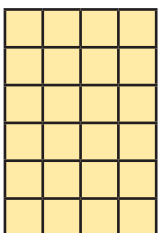
$5 \times 4 = \underline{\hspace{2cm}}$



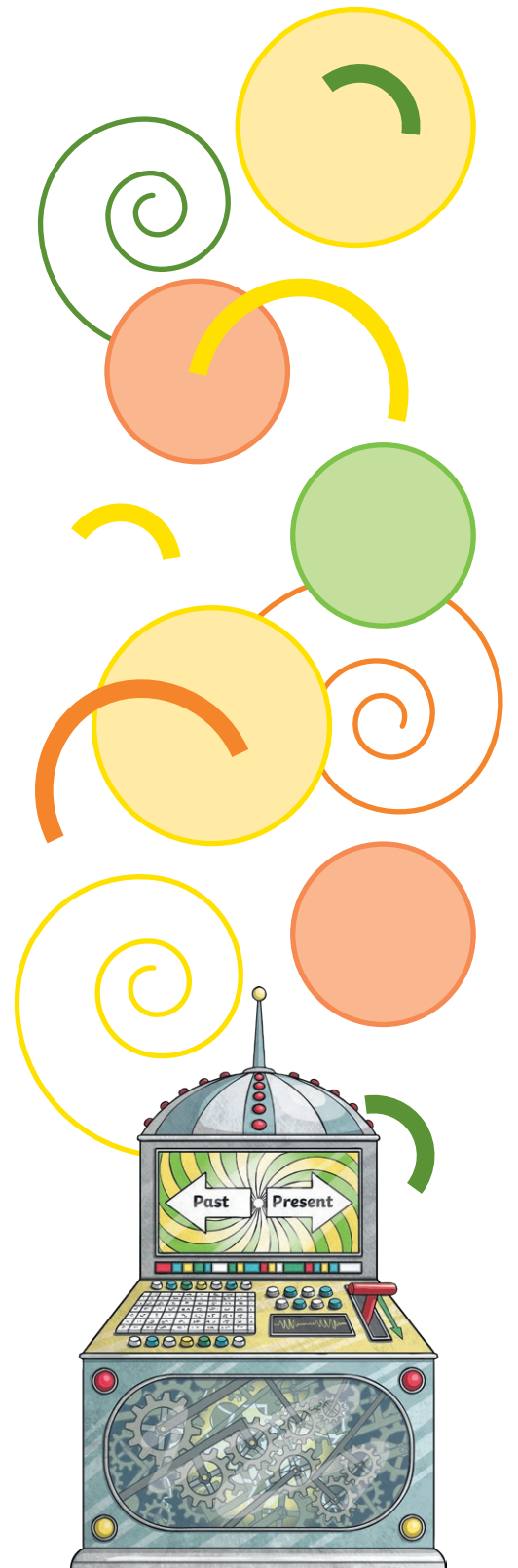
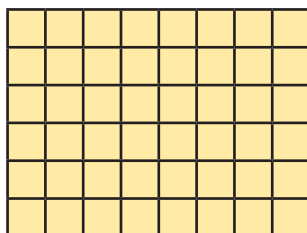
$5 \times 8 = \underline{\hspace{2cm}}$



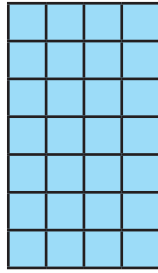
$6 \times 4 = \underline{\hspace{2cm}}$



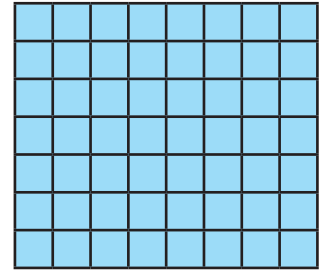
$6 \times 8 = \underline{\hspace{2cm}}$



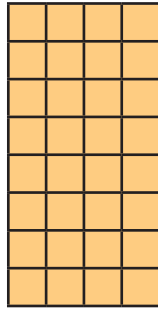
$7 \times 4 = \underline{\hspace{2cm}}$



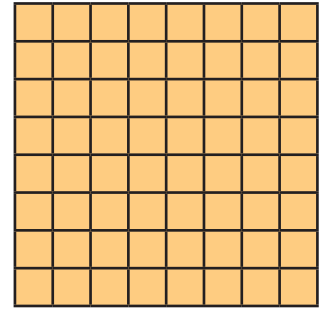
$7 \times 8 = \underline{\hspace{2cm}}$



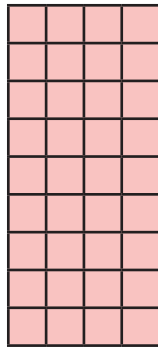
$8 \times 4 = \underline{\hspace{2cm}}$



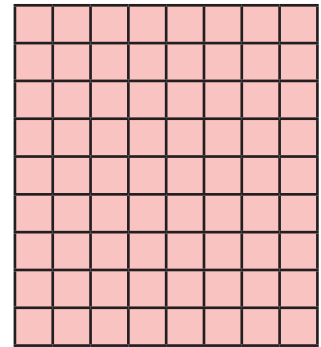
$8 \times 8 = \underline{\hspace{2cm}}$



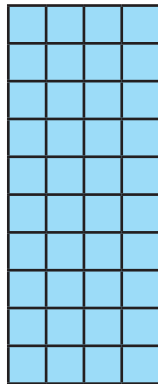
$9 \times 4 = \underline{\hspace{2cm}}$



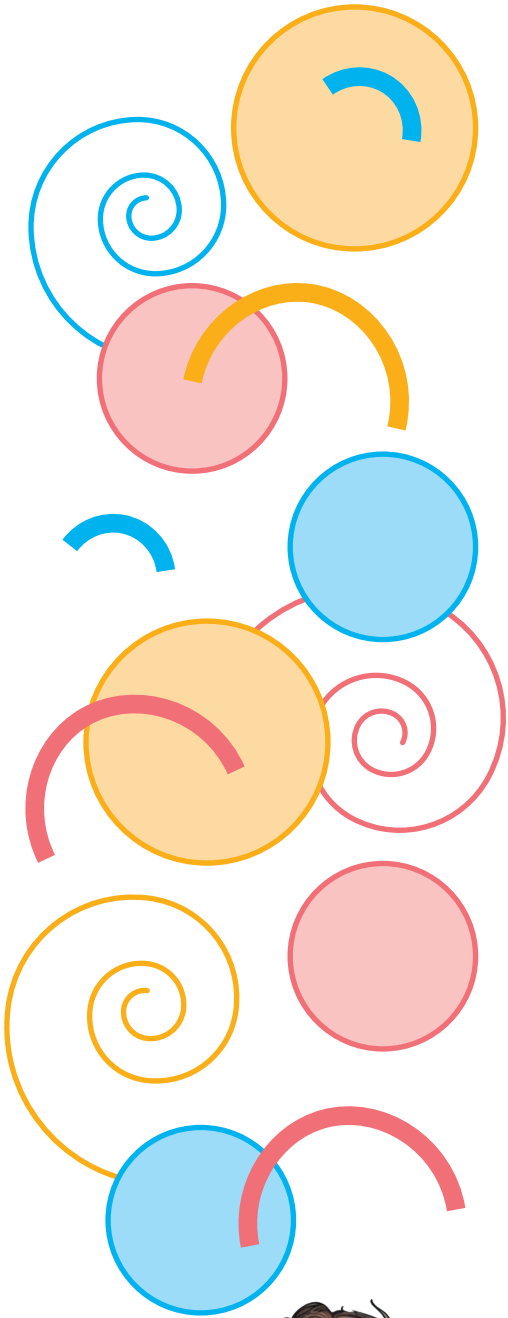
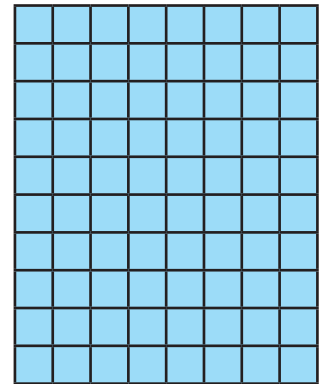
$9 \times 8 = \underline{\hspace{2cm}}$



$10 \times 4 = \underline{\hspace{2cm}}$



$10 \times 8 = \underline{\hspace{2cm}}$



Activity 3

Give the missing answers then circle all the numbers which appear as answers in both the 3 and 6 times table.

Three times table				
1	×	3	=	3
2	×	3	=	
3	×	3	=	
4	×	3	=	
5	×	3	=	15
6	×	3	=	
7	×	3	=	
8	×	3	=	24
9	×	3	=	
10	×	3	=	

Six times table				
1	×	6	=	6
2	×	6	=	
3	×	6	=	
4	×	6	=	
5	×	6	=	30
6	×	6	=	
7	×	6	=	
8	×	6	=	48
9	×	6	=	
10	×	6	=	

