

Year 5 Summer Term 1 SPaG Mat

5

a
Add a comma in the correct places in this sentence and underline the relative pronoun.

Georgia was looking forward to December 21st which was the day she was leaving for Lapland.



b
Circle the conjunctions in the sentences below.

When Susan fell off the swing, she grazed her knee.

Grandpa Joe leapt with joy because Charlie now owned the chocolate factory.

c
Mr Whoops has accidentally jumbled up his verb suffixes. Which suffix belongs to each root word?

final

ify

solid

ise

design

ate

d
Tick all the sentences that contain an adverb of possibility:

Cassie could be named star of the week.

Surely, you must agree with me?

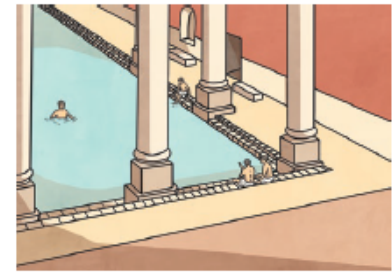
They certainly are a special group of people.

Now, use a different adverb of possibility in a present progressive sentence.

e
Insert ONE comma in the correct place in each sentence below:

In ancient Roman times only men were allowed to attend the public baths.

Unfortunately women were not permitted within the building.



f
'Light' can be used as a verb and a noun. Write a sentence where 'light' is used as a verb.
